

Friends of The Legacy Trail Membership Meeting Trail Update



Topics

- Clark Rd and Bee Ridge Rd Pedestrian Bridges
- Bifurcated Trail Project
- Volunteer Opportunities
- Team Updates



Clark and Bee Ridge Pedestrian Bridges

- Florida Department of Transportation Project
- Design provides a min 12-ft clear width shared use path on the bridge and ramp approaches
- Includes an alignment over SR 72 (Clark Road) that can accommodate the future extension of McIntosh Road
- Final design being submitted this month
- Construction anticipated to begin in Fall 2023



Clark Road Pedestrian Bridge



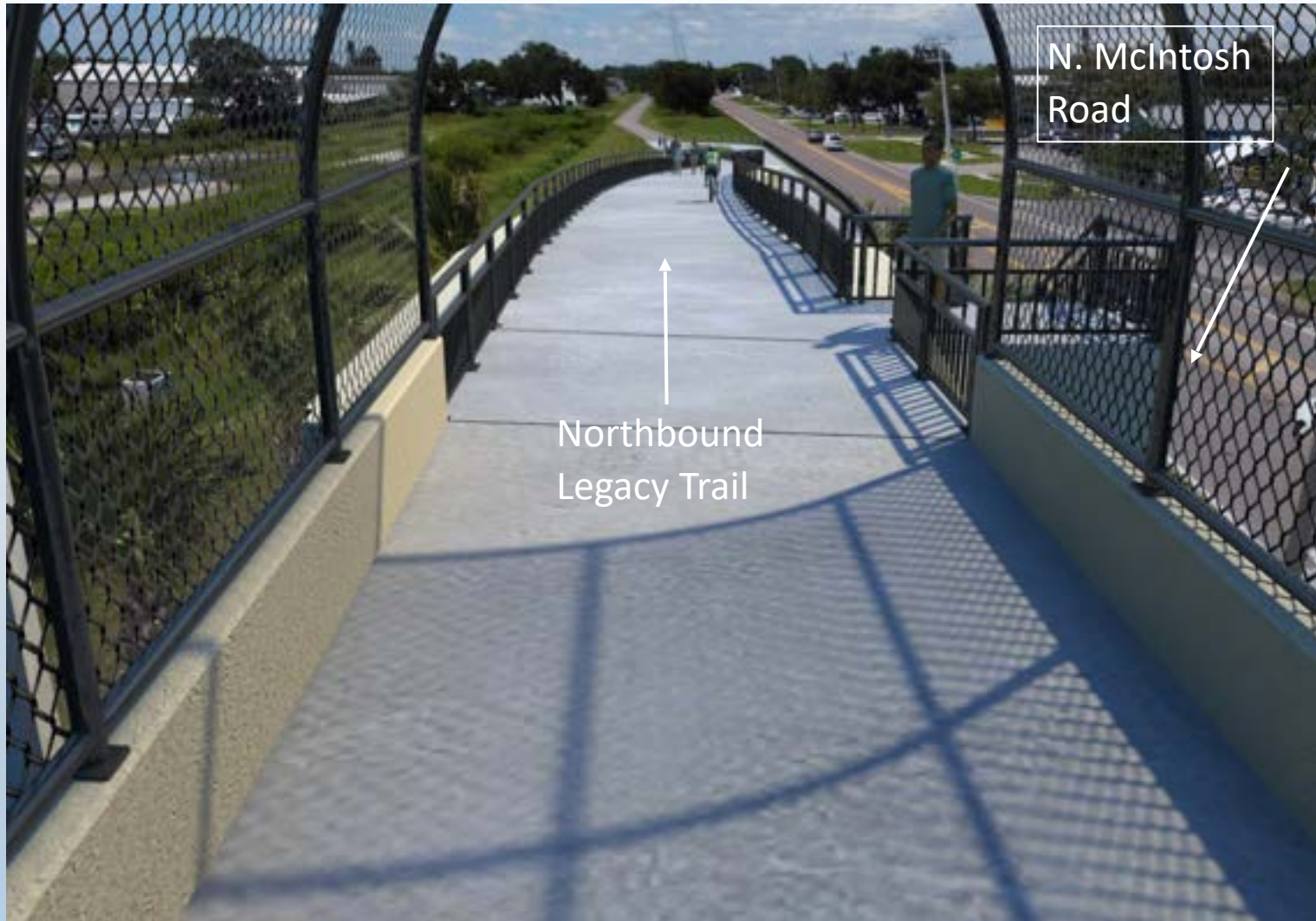
Clark Road Pedestrian Bridge



Westbound
Clark Rd

Eastbound
Clark Rd

Clark Road Pedestrian Bridge



Bee Ridge Road Pedestrian Bridge

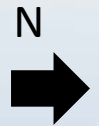


Bee Ridge Road Pedestrian Bridge



Eastbound
Bee Ridge Rd

Westbound
Bee Ridge Rd



Bee Ridge Road Pedestrian Bridge



Northbound
Legacy Trail

Bifurcated Trail

Bifurcated Trail

- A separate trail to provide for a variety of user opportunities.
 - IE. Bike commuters, recreational riders on one path with dog walkers, strollers, kids learning to ride a bike on another.
- A management tool on high-use trails.
- The Legacy Trail is seeing exponential increase in use.
 - In 2022, over 649,500 users.
 - Over 677,145 users in the last 12 months.

What are the benefits of a bifurcated trail?

- Separates different types of users.
- Increases the overall user experience.
- Decreases user conflict.
- Increases user safety.
- Improve recreational opportunities and improves the access and use of trails by persons with disabilities.

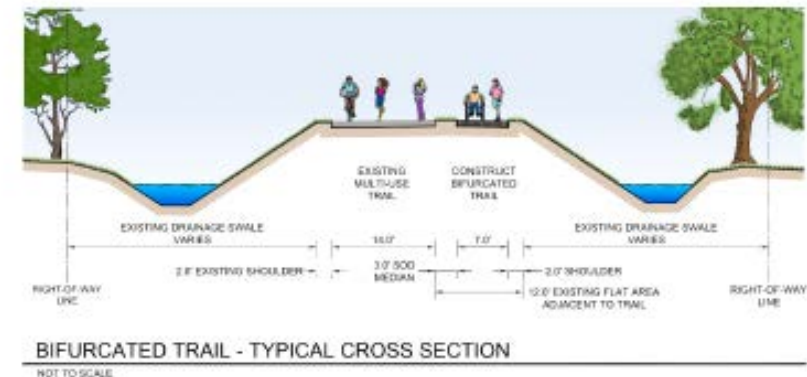
RTP Project

Legacy Trail Extension – Bifurcated Trail Project

- 7' wide asphalt paved trail adjacent to existing 14' wide paved trail
- 3' wide grass median with 2' shoulder
- Total of ~4.5 miles designed for bifurcated trail installation



LEGACY TRAIL PHOTO WITH ADDED BIFURCATED TRAIL



Bifurcated Trail



Phase I

Phase I

- South Shade Avenue to South Beneva Road
- 1.5 miles of bifurcated trail



Bifurcated Trail Location Phase I

Phase I

- South Shade Avenue to South Beneva Road
- 1.5 miles of bifurcated trail



Funding and Support

Support

- Funding and project support from the Friends of The Legacy Trail (FLT) and Sarasota Manatee Bicycle Club (SMBC).

Public Participation

- Virtual Public Meeting
- FLT and SMBC Board Meeting
- Park Advisory and Recreation Council (PARC) Meeting



Trail Updates





Thank you!

Ben Nussbaum – Trails Coordinator
bnussbaum@scgov.net
941-875-4693

Carrie Dill – Trails Specialist
cdill@scgov.net
941-275-6077



Nathalie Smith – Trails Management
ndsmith@scgov.net
941-661-1213

Megan Eidel – NAT Manager
meidel@scgov.net
941-237-0551